

C series Tin Roof Mounting System



5 C series Tin Roof Mounting System is further divided into 5 types, namely: C-A, C-B, C-C, C-D and C-E for your choice.

The material of C series Tin Roof Mounting System is aluminum alloy (6063-T6). It has light weight, easy transportation and easy installation features. Tin Roof Mounting System has different types and sizes, which is widely used for factories, warehouses and houses.

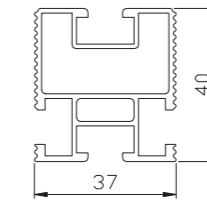
Samil Power offers several flexibility and solidity Tin Roof Mounting Systems to meet various photovoltaic systems requirements. Our designers can customize the best PV mounting system solution for your individual needs.

Components List for C-A



1

318-71091-00 Rail D

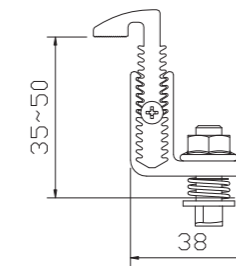


- Material : AL 6063-T6
- Supporting modules, suitable for a variety of installations
- Standard types: 2120mm/3140mm/3420mm



2

760-30034-00 Adjustable End Clamp Assembly - A01

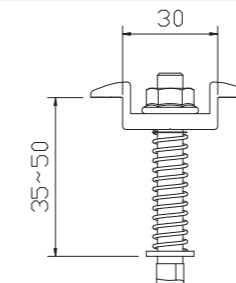


- Material : AL 6063-T6 / SUS304
- Fixing modules, suitable for modules of thickness ranging from 35mm to 50mm

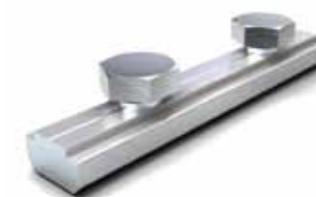


3

760-30056-00 Middle Clamp Assembly - A01

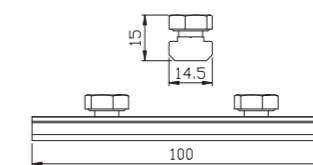


- Material : AL 6063-T6/sus304
- Fixing modules, suitable for modules of thickness ranging from 35mm to 50mm



4

760-30086-00 Rail Connector Assembly - A01

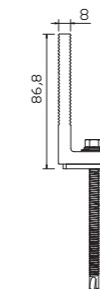


- Material : AL 6063-T6/ SUS304
- Screw: Hex screw M8*10mm



5

760-30041-00 L foot - A01



- Material : AL 6063-T6/ SUS304
- Screw: Self-drilling screw ST6.3*63mm